



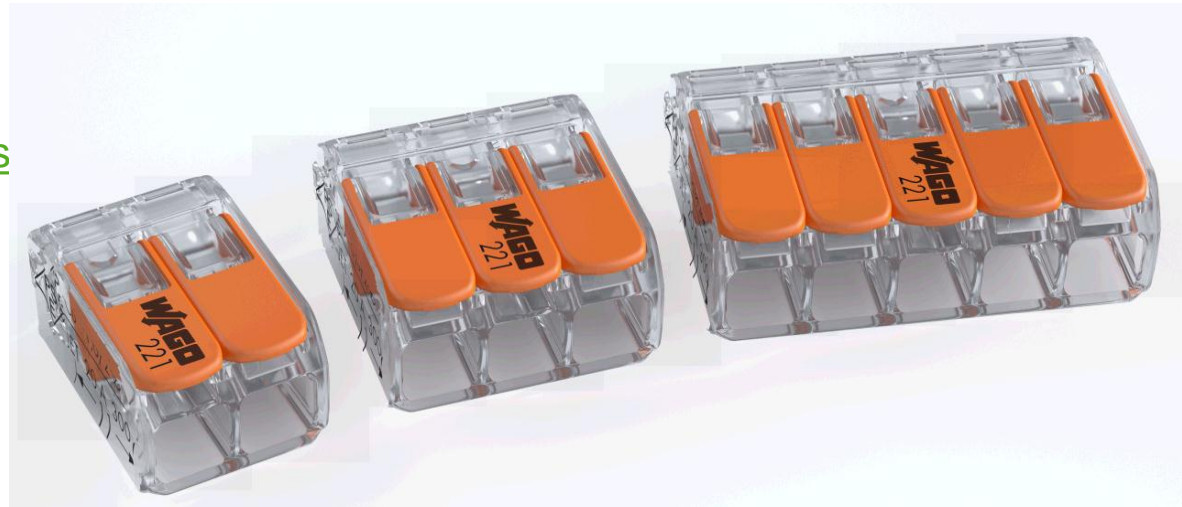
## **221 Series *LEVER-NUTS*®**

Compact Splicing Connectors for all Wire Types

# 221 Series *LEVER-NUTS*® Compact Splicing Connector

## Overview

- ▶ [General description](#)
- ▶ [Value proposition](#)
- ▶ [Target markets](#)
- ▶ [Features / Advantages / Benefits](#)
- ▶ [Variants / Types](#)
- ▶ [Product Features at a Glance](#)
- ▶ [Technical Data](#)



# 221 Series **LEVER-NUTS**<sup>®</sup> Compact Splicing Connector

## General description

The **NEW LEVER-NUTS**<sup>®</sup> COMPACT Splicing Connector 221 Series is the successor to the Classic Compact Splicing Connectors of the 222 Series.

With the proven lever technology of the 221 series, WAGO ensures that you can connect all wire types (solid, stranded, flexible) without the need for any tools.

The **NEW** connector family is 40 % smaller than its predecessor—providing 40 % more junction box space for the user.

The housing is 100 % transparent, allowing you to easily verify that the wire is inserted properly, AND that the wire is stripped to a proper length.

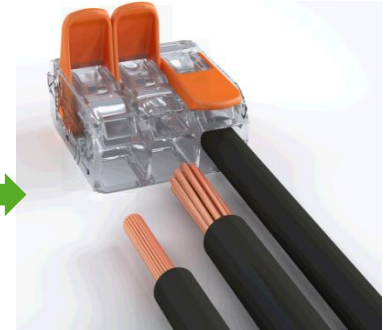


# 221 Series *LEVER-NUTS*<sup>®</sup> Compact Splicing Connector

## Our Value Proposition

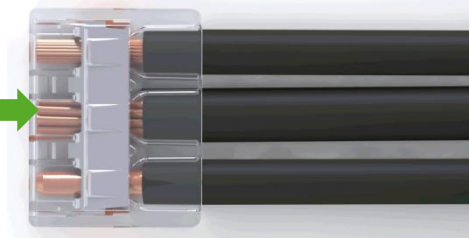
- *Fast, easy, and safe* wiring of all wire types in the ***smallest possible space***

**COMPACT**



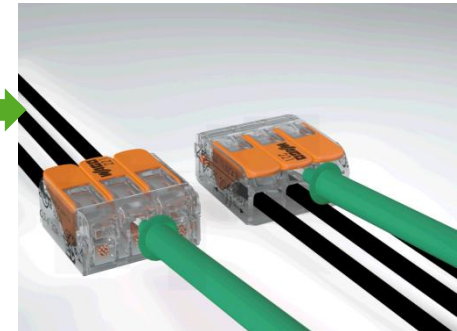
- The ***transparent housing*** further enhances the safety by allowing for ***visual verification*** of proper wire insertion AND proper strip length at a glance.

**TRANSPARENT**



- The housing of 221 Series has ***Two test slots*** to contribute to ***easy testing*** of the connector ***no matter the orientation***.

**CONVENIENT**



- Handling comfort is enhanced by significantly reduced lever operating forces, and sidewall detents for easy gripping.

**EASY TO USE**



# 221 Series **LEVER-NUTS**<sup>®</sup> Compact Splicing Connector

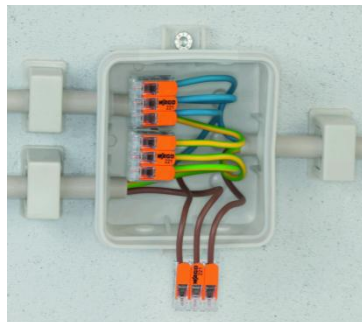
## Target Markets and Applications

### Complete Versatility

The WAGO 221 Series is the new ***all-rounder*** in electrical interconnection. Its ability to connect all wire types (solid, stranded, flexible) in sizes AWG 24 – 12 enables universally flexible applicability.

***221 Series can be used wherever different wire types have to be connected in a compact space.***

For this reason there are many different fields of application for the 221 series. They can be used for example in traditional electrical installations/junction boxes, lighting fixtures, for the connection of motor leads, control wiring, or even in mobile applications like RV's, emergency vehicles, and others.



# 221 Series *LEVER-NUTS*<sup>®</sup> Compact Splicing Connector

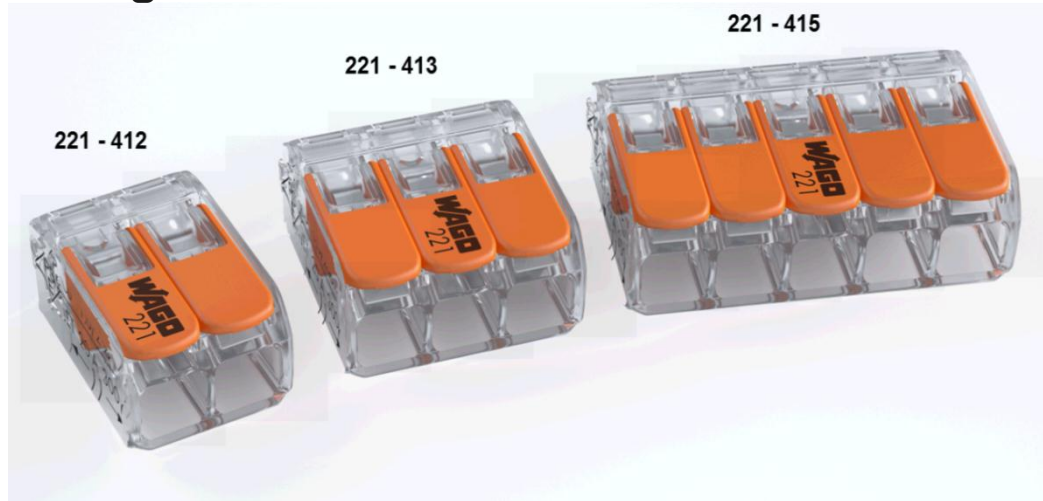
## Features / Advantages / Benefits

- The compact housing size reduces box-fill, meaning the space in the junction box can be used in optimal way
- The transparent housing promotes the safe installation of the connector by allowing for visual verification of proper strip length and proper insertion.
- The two test slots allow easy access for test probes, regardless of its orientation.
- The connector accepts of all wire types in a wide range of sizes, so it can be used in various applications.
- The lever forces are significantly reduced as compared to the 222 Series, which means that handling of the 221 Series is more comfortable.
- The recessed sidewalls provide additional handling comfort of the connector during installation.
- The contrast of the black printing on the transparent housing provides maximum legibility of the technical data.
- The connector provides the connection of solid, stranded, and flexible wires up to 12 AWG.
- The connector is completely re-usable.



# 221 Series *LEVER-NUTS*<sup>®</sup> Compact Splicing Connector

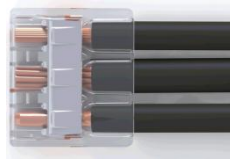
## Variants / Types / Packages



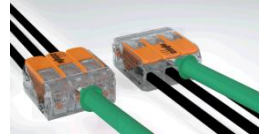
Variant	Description	Item-No.	Packing Unit Options	
			Box (qty)	Bulk (qty)
2 – Conductor	2 – Conductor splicing connectors, transparent housing, orange lever	221 – 412	100	2500
3 – Conductor	3 – Conductor splicing connectors, transparent housing, orange lever	221 – 413	50	2500
5 – Conductor	5 – Conductor splicing connectors, transparent housing, orange lever	221 – 415	25	1000

# 221 Series *LEVER-NUTS*<sup>®</sup> Compact Splicing Connector

## Product features at a glance



*transparent housing—  
inspect for proper strip  
length and full insertion*



*2 test slots—front and rear*



*comfortable easy-to-lift lever*

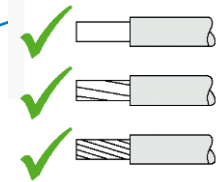


*recessed  
gripping  
areas on  
the sides*



*high-contrast  
printing*

*for all wire types*



*wide range of  
wire sizes:  
24—12 AWG*



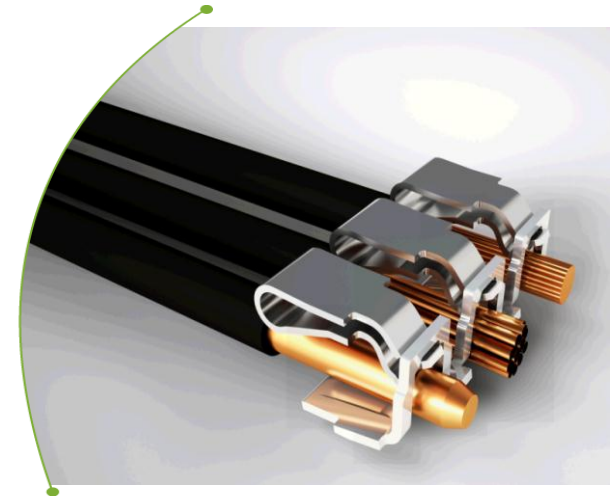
# 221 Series *LEVER-NUTS*<sup>®</sup> Compact Splicing Connector

## Technical data per:

**UL**

**ENEC**

- |                         |           |                         |
|-------------------------|-----------|-------------------------|
| ● Voltage:              | 600V      | 450V                    |
| ● Max. Current:         | 20A       | 32A                     |
| ● Max. Temperature:     | 105°C     | T-Mark 85°C             |
| ● Wire range--solid:    | AWG 24—12 | 0,2 – 4mm <sup>2</sup>  |
| ● Wire range--stranded: | AWG 24—12 | 0,2 – 4mm <sup>2</sup>  |
| ● Wire range--flexible: | AWG 24—12 | 0,14 – 4mm <sup>2</sup> |



**WE!**  
**INNOVATE!**

